



Rougon Elementary & Jr. High School

# Welcome Forum

Question and Answer

2021-2022

10-year educator

**Aiman Bayoumi**  
Principal

### **Rougon Elementary & Jr. High School 2011**

- Long Term Substitute

### **Livonia High School 2011 -2015**

- Social Studies (Civics, U.S. History, LA History)
- LHS Middle School Teacher of the Year 2015

### **STEM Magnet Academy of Pointe Coupee 2015 - 2019**

- Social Studies (AP Human Geography, LA History)
- Teacher Leader & Mentor
- Pointe Coupee School District Wall of Fame inductee 2016
- Pointe Coupee School District Wall of Fame inductee 2017
- SMA Teacher of the Year 2017
- Pointe Coupee School District Teacher of the Year 2017
- American Legion Teacher of the Year 2018

### **Livonia High School 2020-2021**

- Assistant Principal

**25 Year Educator**

**Bridget Bush**  
**Assistant Principal**

**First 16 years teaching were in Pointe Coupe**

- 1-year Morganza Elementary (4th Grade Teacher)
- 15 years Valverda Elementary (teaching and Professional Development Coach)
- Valverda Teacher of the Year
- Next 8 years teaching were in West Feliciana at WFMS

**6th & 7th grade Science/Math**

- WFMS became LEAD Lighthouse School during my tenure
- WF Parish Middle School Teacher of the Year 20-21 School Year
- Served as Lead Teacher Served on the WFMS Lighthouse Team

**Last year I taught 6th/7th grade Math at Caneview in WBR**

3 Years

Vision

We must believe in  
the vision

Rougon Elementary & Jr. High School

# A Model of Excellence



**Theme:**

Dream Big  
Work Hard  
Shine Bright

To reach the vision...

# Mission

## Mission: To raise student achievement by...

- **Providing a Safe Learning Environment**
  - Safe physically, emotionally, and socially
- **Fostering a Positive Learning Culture**
  - Praise and celebrate student achievements, provide engaging instruction, offer athletics, enrichment and extra-curricular programs
- **Delivering High Quality Instruction**
  - Provide teachers with guidance, support, and coaching
- **Maintaining a strong and productive partnership with parents and the community.**

# Upcoming Schedule

- **Tuesday August 10th** – (6:30PM) Substitute Teacher Informational Meeting (Zoom)
- **Monday, August 16<sup>th</sup>** (5:30PM – 6:30 PM) In-Person Parent Night for Grades K-2
- **Monday August 16<sup>th</sup>** (11:00AM-12:00PM) – Substitute Teacher Candidate Luncheon
- **Tuesday, August 17<sup>th</sup>** (5:30PM – 6:30 PM) In-Person Parent Night for Grades 3-5
- **Wednesday, August 18<sup>th</sup>** (5:30PM – 6:30 PM) In-Person Parent Night for Grades 6-8
  - Students are not allowed at this event. We will have an orientation for them on campus the first week of school.
  - Entry is limited to two guests per family.
  - All guests must wear a mask.
- **Monday, August 30<sup>th</sup>** – First Parent/Community Organization Meeting – Details TBA

## Building Improvements & Purchases

# What's New

- **New WINDOWS!**
- **Cleaned out storage rooms and threw tons of broken items out. Storage is much more organized.**
- **Organized and usable rooms:**
  - PLC (by lounge)
  - Literacy Academy
  - Data Room
  - Library (for meetings)
  - Teacher Workroom
  - Lounge
  - Conference Room (upstairs)
  - Bookroom (for storing multiple copy books).
  - Bayoumi Office Extentison (old testing room)
- **Pressure washed most areas.**

## Building Improvements & Purchases

# What's New

- **Classes have matching tables/chairs.**
- **5 large white boards (good kind) - in transit**
- **Plants by entrances.**
- **All bathrooms – serious cleaning and paint**
- **Teachers painted classrooms!! Beautiful!**
- **New rugs for all entrances, automatic air dispensers, etc.**
- **Landscaping – Front of the building and around campus sign**
  - **Waiting on a quote**
- **15 surface pros – expected to arrive in December**
- **Much more to come....**



## District Policy

# What's New

(like yesterday new)

- **Masks must be worn by all students K-8**
- **Back up plans are in the works in the event students go virtual.**
- **Arbor Health will be coming soon to conduct on-site vaccinations. Students, parents and teachers will get paid for getting vaccinated.**

District Policy

## What's New

- **Dress Code** – jackets and coats that have a hood attachment are not allowed on campus
- **Jackets, coats, and sweatshirts** which have a logo larger than 2inch x 2inch are not allowed inside the building

## Student Dress Code

# Dress Code

- **Grades K – 3**
  - Uniform shirt and bottoms required
  - Belt is not required
  - Shirt is not required to be tucked in
  - Mask must be worn indoors
- **Grades 4 - 5**
  - Belt is highly recommended but not required
  - Shirt must be tucked in
  - Mask must be worn indoors
- **Grades 6 - 8**
  - Belt is required
  - Shirt must be tucked in
  - Mask must be worn indoors
  - Absolutely no sagging.



- Our spirit shop is live and full of a wide selection of Rougon spirit gear for students, parents, and teachers.
- There is a uniform section where you will find school approved jackets and our new optional uniform shirt that we will be phasing in this year.
- The new uniform shirt is navy blue and includes a white Rougon logo. This uniform shirt is not required.
- You can also find our PE uniform for students in grades 6-8 at the online shop. These uniforms are required to participate in Physical Education (grades 6-8 only). Students have until the start of the second grading period to get their uniforms. The order window will close on August 15th.
- \$2 from every adult item purchased goes back to the school



# Curriculum

## CURRICULUM

*The PCP School System purchases all curriculum resources needed for instruction; the schools purchase corresponding kits requested by teachers. Manuals are provided (minus Guidebooks 3-8), and each curricula offers digital versions.*

Subject	Grades	Curriculum	Digital Location
	HS & PK	Creative Curriculum	
ELA	K-2	ARC Core	SchoolPace Connect (Clever)
	3-12	Guidebooks	Louisiana Curriculum Hub
Math	K-5	I-Ready Classroom	iReady (Clever)
	6-11	Illustrative Math	Kendall Hunt
Science	K-6	Amplify	Amplify (Clever)
	7-8	OpenSci Ed	Kendall Hunt
Social Studies	K-12	LA Scope and Sequence	Louisiana Believes

# Grade Reports Schedule

**Pointe Coupee Parish School System  
GRADING REPORTS SCHEDULE  
2021 - 2022**

9-week PERIOD		END OF PERIOD DATE	*HOME CONNECTION
1 <sup>st</sup>	PROGRESS REPORTS	Friday, September 3, 2021	OnCourse Connect Parent Portal
	REPORT CARDS	Friday, October 8, 2021	Wednesday, October 13, 2021
2 <sup>nd</sup>	PROGRESS REPORTS	Friday, November 5, 2021	OnCourse Connect Parent Portal
	REPORT CARDS	Tuesday, December 21, 2021	Thursday, January 6, 2022
3 <sup>rd</sup>	PROGRESS REPORTS	Friday, February 4, 2022	OnCourse Connect Parent Portal
	REPORT CARDS	Monday, March 14, 2022	Wednesday, March 16, 2022
4 <sup>th</sup>	PROGRESS REPORTS	Friday, April 13, 2022	OnCourse Connect Parent Portal
	REPORT CARDS	Monday, May 23, 2022	Wednesday, May 25, 2022

\*Progress grades can be accessed through the OnCourse Connect Parent Portal.

\*Report cards can be accessed in the OnCourse Connect Parent Portal AND will be sent home on the date listed.

***DATES ARE SUBJECT TO CHANGE***

## New Programs

# Nutrition Education Program

- Elementary age focused nutrition education program sponsored by the Greater Baton Rouge Food Bank.
- Once a month visit to teach the students about different fruits and vegetables. The program covers history, fun facts, nutrition information, etc.
- Students get a sample of the fruit or vegetable discussed that day.

### **Meeting Dates**

- August 19
- September 16
- October 21
- November 18
- December 16

## New Programs

# Arbor Health Clinic (Mobile Unit)

- **Mobile Unit will service our students twice a week starting on September 7th (Tuesday/Thursday)**
- **Students will never get pulled during Math and ELA**



# School Wide Discipline Plan

K-8



# Discipline Categories

- **Minor**

- Four minor infractions = One serious infraction

- **Serious**

- Four serious infractions = One major infraction

- **Major**

- Expellable offenses

Minor

## Discipline Categories

### ■ Minor

- Dress code
- Class tardy
- Excessive talking
- Eating in class
- Horse playing
  - depending on severity, this can be a serious infraction
- Refusal to complete class work
- Sleeping
  - Teachers please attempt to wake student up before write up.

# Lunch Detention

- Students will be placed in lunch detention for minor and sometimes serious infractions.
- Teachers can place a student in detention for **one day** without permission from admin.
- Any behavior that warrants more than one day, should be recorded via the online write-up form. Admin will then add those students to the detention roster

# Discipline Categories

## Serious

## Serious

- Willful Disobedience
- Inappropriate Language
  - Profanity, Body Language, Actions
- Unauthorized class absence
- Cell Phone Use
  - Phone is taken from student and sent to admin. Refusal to give teacher the cell phone will result in a harsher consequence.
    - Distraction, liability
- Serious classroom disruption
- Littering
  - Student will be required to pick up the litter and serve a consequence
- Loitering
- Cheating/Plagiarism
- Bus Misconduct
- Public Displays of Affection

## Breakdown

# Bus Misconduct

Misconduct by any student while riding a school bus represents a serious threat to the safety of all occupants of the bus as well as other motorists, pedestrians, and members of the community.

Parents/guardians are urged to discuss with their children appropriate school bus conduct in order to ensure bus safety.

All students who misbehave while riding the school bus will be disciplined according to the School Wide Discipline Plan.

A bus suspension is separate from a school suspension and applies only to the loss of bus riding privileges unless subject to other disciplinary actions, such as out-of-school suspension. Bus suspension does not affect or excuse school attendance.

A student who boards or attempts to board a school bus other than the one to which the student is assigned; or who boards or departs a school bus at a location other than assigned pick-up or drop-off bus stop without prior school administration permission, is considered to be trespassing.

Major

## Discipline Categories

### **Major** (Expellable Offenses)

- **Destruction of School Property**
  - This includes graffiti in the classroom, bathrooms, or anywhere else on campus.
- **Cursing at or threatening Faculty**
- **Theft**
- **Possession/Use of Tobacco/Vape Products and/or Paraphernalia**
- **Inappropriate Computer and/or Internet Usage**
- **Fighting**
- **Bullying**
- **Sexual Harassment**
- **Drugs/Alcohol on Campus**
- **Weapons on Campus.**

PCAP

# Pointe Coupee Alternative Program

- As an alternative to expulsion; students who commit major disciplinary offenses such as possession of drugs, alcohol, excessive major referrals that result in four or more in school suspensions, or any other major offenses will have a disciplinary hearing and be assigned to PCAP for 10 or more days. Depending on the nature of the incident.
- Students assigned to PCAP will be transported directly to the PCAP site at the PCSB office in New Roads.
- Students assigned to PCAP will complete their work using the Edgenuity software program



Alternative Approach

# Restorative Practices

- A restorative conference involves asking a student or a group of students, questions that promote reflective thinking and allowing others the opportunity to listen and empathies.
- The goal is for students to realize what they did wrong, why they behaved in the way they did and the consequences that have resulted from their actions.
- It uses the power of communication to build understanding and empathy between the different individuals involved.
- This kind of approach fosters future positive behavior that is based on the respect and consideration of others, rather than just following school rules because of fear of punitive consequences.

## Alternative Approach

Restorative practices can be used to resolve:

- **Teachers-student & Student-student conflicts**
- **Friendship issues**
- **Incidents involving racism, homophobia, and other forms of discrimination**
- **Political differences**
- **Off-campus issues**

PBIS

# Positive Behavior Intervention Support

- PBIS is an incentive-based program that encourages students to behave well in school.
- PBIS incentives offer an easy and fun way to teach them about behavioral management and prepare them for social, emotional, and academic success for years to come.
- **Classroom Level**
  - All teachers are required to create a PBIS plan for their classroom.
- **School Wide Level**
  - PBIS events will be conducted on a monthly basis. Events can be grade-level or school wide based. Students who have committed a serious and/or major offense that month will not be allowed to participate in the event.

PBIS

# Classroom Examples

- Extra points
- Late homework pass
- Special Seating/Chair
- Drop Lowest Grade
- Treasure Chest
  - Some examples of prizes - keychains, lip balm, sunglasses, candy, chips, etc. Some teachers also use inexpensive lotion, hand sanitizer, and body spray. Reward a single behavior with this incentive or make it a requirement for students to show multiple instances of ethical conduct to earn this incentive.

# Parent Involvement & Engagement

## **School Involvement**

- Form new parent organization
- Substitute teacher help
- Help setup and/or chaperones events
  - Field trips
  - Dances
  - Fundraising events

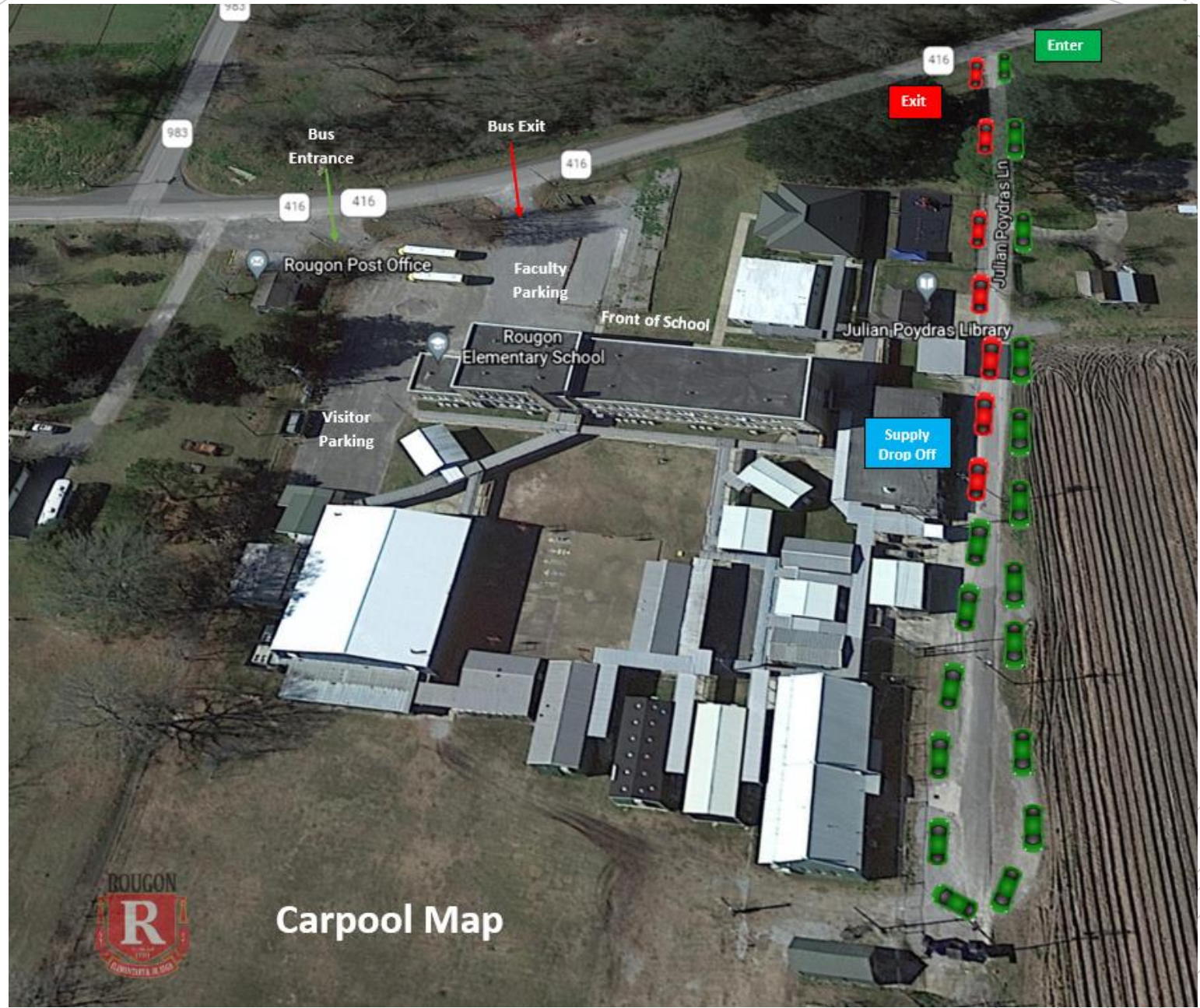
## **Engagement**

- LIT Academy
- Helpful resources and tutorial videos
- Math Nights
- Tech Nights
- Science Fair – Local showcase
- Social Studies Fair – Local showcase

# Substitute Teachers

- **Tuesday August 10th – Substitute Teacher Informational Meeting (Zoom) 6:30PM**
- **Monday August 16<sup>th</sup> – Substitute Teacher Candidate Luncheon hosted on campus**

# First Day of School



# First Days of School

- Carpool drop off 7:25 – 7:45
- Kindergarten – 2nd grade students will be escorted to class from carpool or bus by our duty teachers.
  - Unfortunately, due to covid guidelines, parents will not be able to walk-in the building with their child
- 3 – 5 grade Students will report to the courtyard from carpool or bus
- 6-8 grade students will report to the gym from carpool or bus
- First Day of School Pics
  - 1st and 2nd day
- Grand Band Assemblies
  - Grades K-2 (10:05am)
  - Grades 6-8 (11:15am)
  - Grades 3-5 (2:05pm)
- School Dismissal – 2:57
- If you have any questions or concerns, please call school or you can call me directly on my cell phone at 337-962-3282. You may also email me at [aiman.Bayoumi@pcpsb.net](mailto:aiman.Bayoumi@pcpsb.net)